

Little London Close

Hillingdon • Middlesex • UB8 3UG
PCM: £1,650 PCM



coopers
est 1986

A well presented and spacious two double bedroom apartment to rent situated in a quiet location in Hillingdon providing easy access to Hillingdon Hospital and Stockley Business Park. The property also provides great transport links to Uxbridge Underground Station and High Street, and is just a short drive from the M4/M25 Motorways.

Features include two double bedrooms, family bathroom with shower, spacious lounge, fitted modern kitchen, great storage throughout, private balcony, allocated parking.

Available Furnished.

Two Double Bedroom Apartment

Spacious Lounge

Fitted Modern Kitchen

Family Bathroom with Shower

Great Storage Throughout

Allocated Parking

Nearby to Hillingdon Hospital

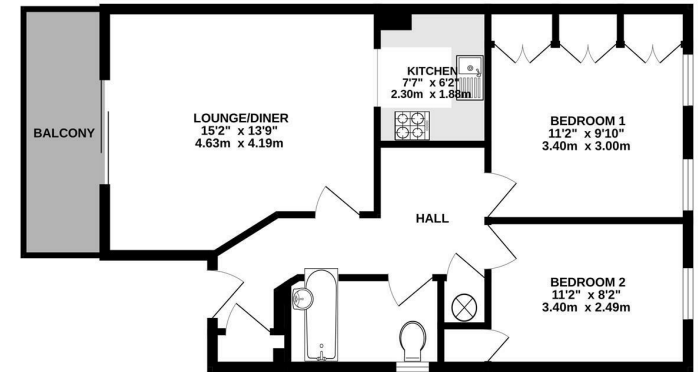
Easy Access to Stockley Business Park

M4/M25 Motorways easily accessible

Available Date



GROUND FLOOR
609 sq.ft. (56.5 sq.m.) approx.



TOTAL FLOOR AREA : 609 sq.ft. (56.5 sq.m.) approx.
Whilst every attempt has been made to ensure the accuracy of the description contained herein, measurements of doors, windows, rooms and any other items are approximate and no responsibility is taken for any error, omission or mis-statement. This plan is for illustrative purposes only and should be used as a guide by any prospective purchaser. The services, systems and appliances shown have not been tested and no guarantee as to their operability or efficiency can be given.
Made with Maptron (2025)

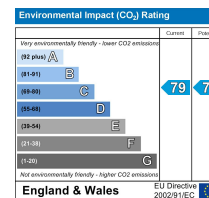
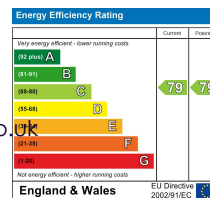


01895 257 566

1 Vine Street, Uxbridge,
Middlesex, UB8 1QE

propertymanagement@coopersresidential.co.uk

CoopersResidential.co.uk



Important Notice: These particulars, whilst believed to be accurate are set out as a general outline only for guidance and do not constitute any part of an offer or contract. Intending purchasers should not rely on them as statements or representation of fact, but must satisfy themselves by inspection or otherwise has the authority to make or give any representation or warranty in respect of the property.

coopers
est 1986